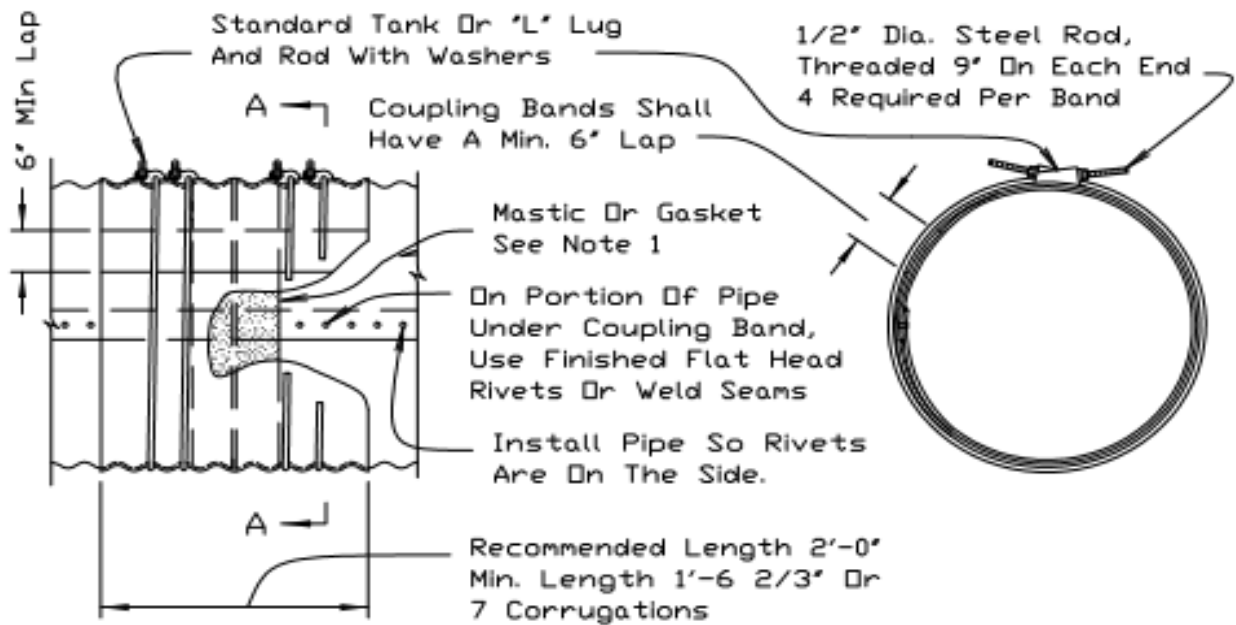


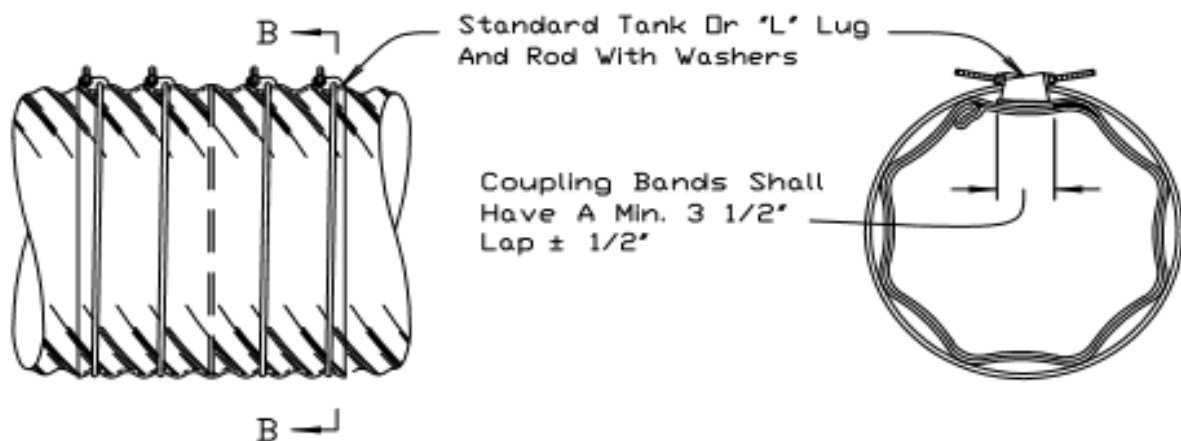
COUPLING BANDS FOR CORRUGATED METAL PIPE



ELEVATION

SECTION A-A

WATER TIGHT COUPLING BAND FOR ANNULAR PIPE



ELEVATION

SECTION B-B

HELICAL CORRUGATED COUPLING BAND

REFERENCE
 Project _____
 Designed _____ Date _____
 Checked _____ Date _____
 Approved _____ Date _____

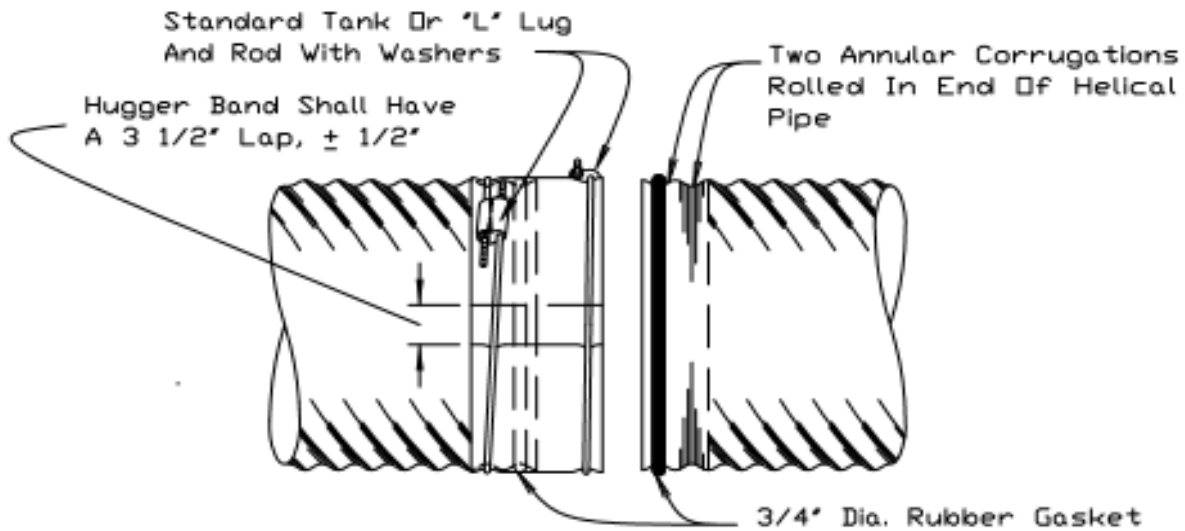


NRCS

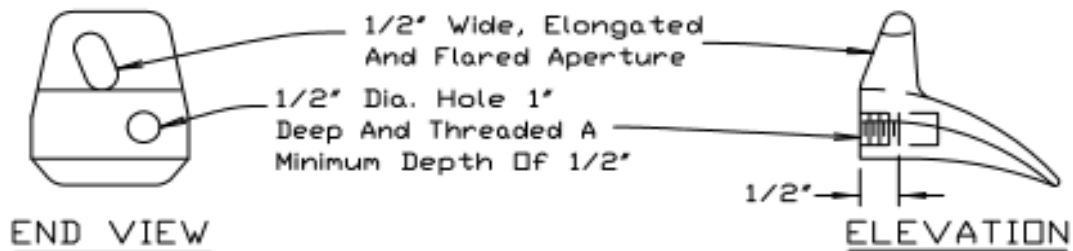
Natural Resources Conservation Service

STANDARD DWG. NO.
 IL-580
 SHEET 1 OF 2
 DATE 7-25-94

COUPLING BANDS FOR CORRUGATED METAL PIPE



WATER TIGHT HUGGER TYPE COUPLING BAND



ALTERNATE "L" LUG

NOTES:

1. The Pipe Ends Covered By A Coupling Band And The Lap Seam Shall Be Coated With Bituminous Mastic. A Neoprene Gasket May Be Used In Lieu Of The Bituminous Mastic. The Gasket Size Shall Be 3/8" Thick With A Minimum Width Of 7" Centered On The Pipe Joint And Fastened At The Ends To Form A Full Circle.
2. Materials and coatings of watertight coupling bands, sleeve joints and helical metal bands shall be the same as that specified for the pipe.
3. All tank lugs, rods, and nuts shall be galvanized steel. Where aluminum bands are used, the rod and lugs shall be separated from the aluminum by at least two (2) layers of plastic tape with a total thickness of 24 mils or more.
4. Corrugated metal coupling bands may be fabricated from one or two pieces with equal minimum lap lengths.

REFERENCE
 Project _____
 Designed _____ Date _____
 Checked _____ Date _____
 Approved _____ Date _____



NRCS

Natural Resources Conservation Service

STANDARD DWG. NO.

IL-580

SHEET 2 OF 2

DATE 7-25-94