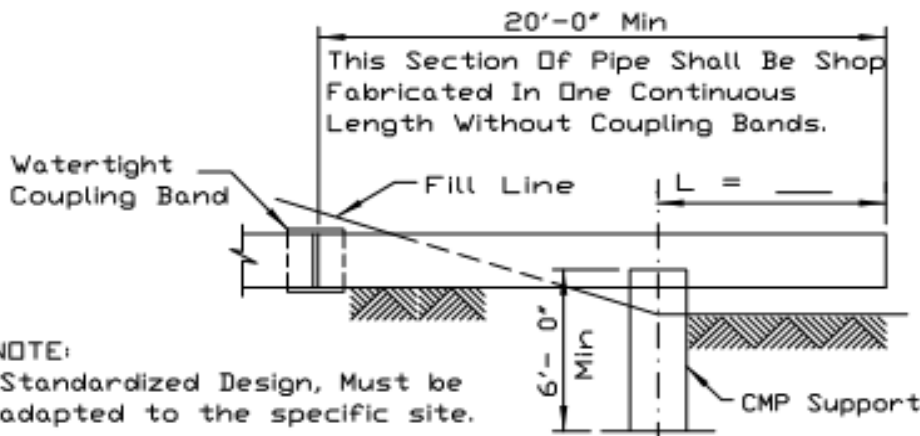


CORRUGATED METAL PIPE SUPPORT



NOTE:
Standardized Design, Must be adapted to the specific site.

SECTION ON CENTERLINE

TABLE OF DIMENSIONS				
C.M. PIPE DIA (INCHES)	BOTTOM PLATE (METAL THICKNESS AND GAGE)	VOLUME OF CONC. (CU YDS / LIN FT) OF CMP	7/16" DIA HOLD DOWN ROD LENGTH	3/4" DIA ROD LENGTH
8	.064, 16 GA.	.01	2'-3"	1'-2"
10	.064, 16 GA.	.02	2'-6"	1'-4"
12	.064, 16 GA.	.03	2'-8"	1'-6"
15	.079, 14 GA.	.05	3'-0"	1'-9"
18	.079, 14 GA.	.07	3'-4"	2'-0"
21	.079, 14 GA.	.09	3'-8"	2'-3"
24	.109, 12 GA.	.12	4'-0"	2'-6"
30	.109, 12 GA.	.18	4'-8"	3'-0"
36	.138, 10 GA.	.26	5'-4"	3'-6"
42	.168, 8 GA.	.36	6'-0"	4'-0"
48	.188, 7 GA.	.47	6'-7"	4'-6"

BILL OF MATERIAL

Galv Steel CMP ___ dia, ___ lin. ft. Metal Thickness ___, Gage ___
 Galv Steel Bottom Plate ___' x ___' Metal Thickness ___, Gage ___
 3/4" Dia. Galv Steel Rod ___ feet, threaded 4' on each end with
 4 washers and 2 nuts.
 7/16" Dia. (min) Galv. Steel Rod ___ feet, with 1/2" dia. (min) upset
 thread (thread approx. 8')
 Galv. Tank Lug - 1 each
 Concrete _____ cu. yds.
 Steel Reinforcement 6.7 pounds

REFERENCE
 Project _____
 Designed _____ Date _____
 Checked _____ Date _____
 Approved _____ Date _____

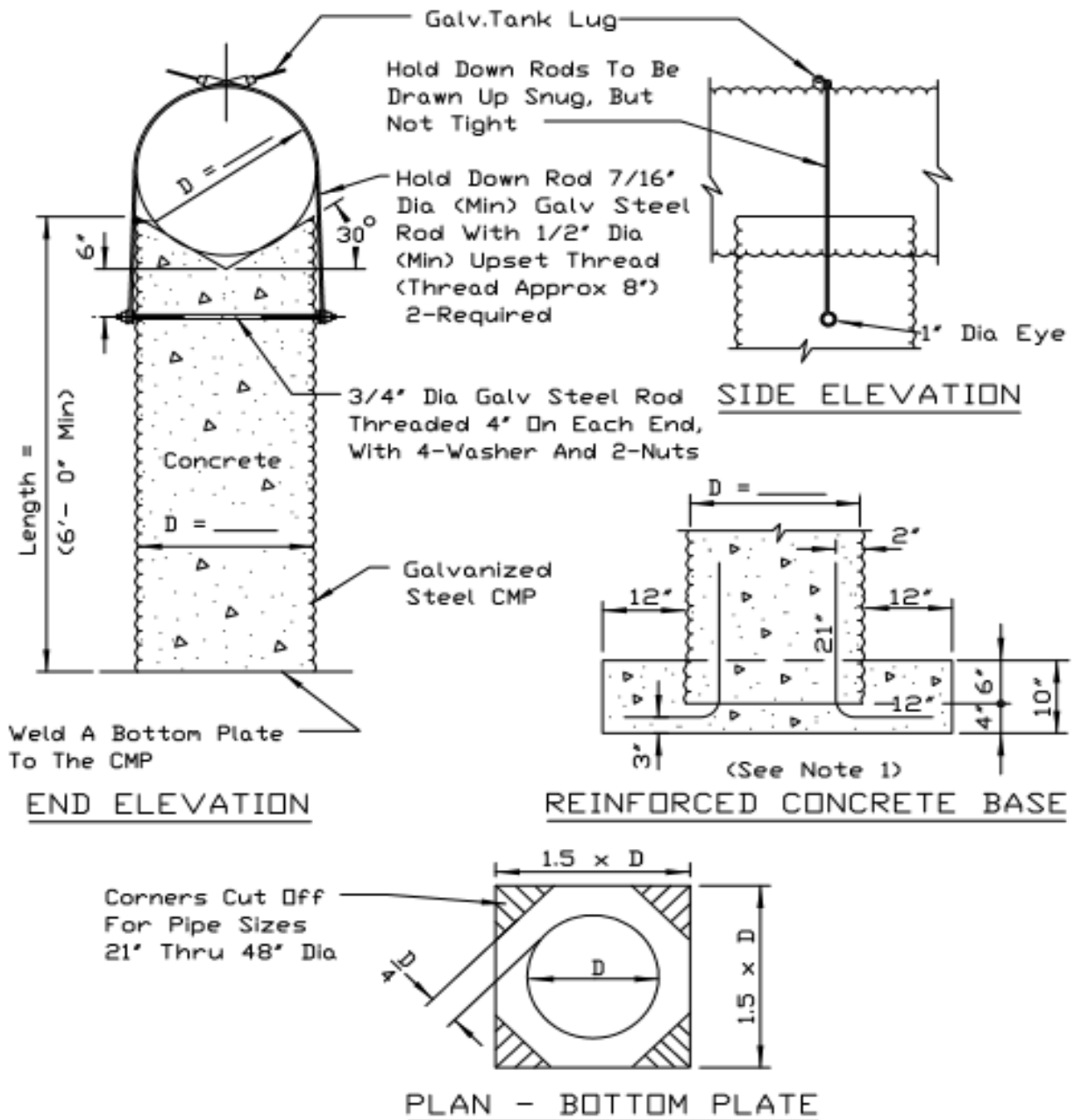


NRCS

Natural Resources Conservation Service

STANDARD DWG. NO.
 IL-586
 SHEET 1 OF 2
 DATE 4-6-94

CORRUGATED METAL PIPE SUPPORT



NOTES:

1. If the pier has to be shortened because of bedrock, a 10' reinforced concrete base must be provided, instead of bottom plate, extending 12' beyond the pipe diameter using 4 - #4 re-bars, 33' long; bent as shown.
2. If principal spillway conduit is aluminum, the surfaces in contact with the concrete shall be separated with a layer of heavy roofing felt.

REFERENCE	
Project	_____
Designed	_____ Date _____
Checked	_____ Date _____
Approved	_____ Date _____



STANDARD DWG. NO.
IL-586
SHEET 2 OF 2
DATE 4-6-94