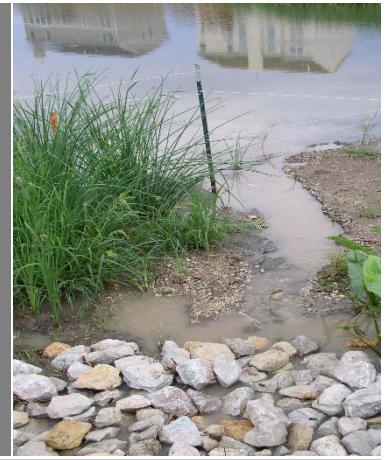


SOIL EROSION & SEDIMENT CONTROL WORKSHOP

Friday, March 22, 2019



The Kendall County Soil & Water Conservation District (SWCD) in partnership with the Village of Oswego are pleased to present our Spring 2019 Workshop. We hope you'll be able to join us!

When:

Friday, March 22, 2019
8:00am – 12:00noon

Where:

Village of Oswego
100 Parkers Mill
Oswego, IL 60543

Who Should Attend:

**Contractors, Developers,
Engineers, Consultants,
Site Inspectors**

Cost:

Free

Space is Limited:

**Advance Registration is
Required**

Contact:

Kendall County SWCD by
3/21/2019 to reserve your spot
at: (630)553-5821 x4009 or
Megan.Andrews@il.nacdnet.net

**Professional Development
Credit Hours** are available for
attending the workshop.

WORKSHOP DETAILS

Session Overview:

- 7:45am **Registration**
- 8:00am **Establishing the Framework – A Fox River Watershed Update**
- 8:15am **Building your Soil Erosion & Sediment Control Toolbox:
The Illinois Urban Manual (IUM)**
Learn how to make the IUM work for you and your project. Current updates to the IUM and the new website will be provided.
- 8:45am **Spring is Here, How to be Prepared on Your Project:
Best Management Practices (BMPs)**
From site stabilization practices to dewatering, ensure stormwater is properly managed onsite.
- 9:45am Break & Products
- 9:55am **General NPDES Permit No. ILR10 for Construction Activities:
Update**
Ensure compliance with your permit by understanding the current requirements.
- 10:25am **Maintaining Compliance from Start to Finish**
Learn about a comprehensive soil erosion and sediment control program approach to achieve compliance. Troubleshooting 101 – what to do and where to turn when faced with a noncompliance issue on your project.
- 11:15am **Inspector Perspective**
Commonly found problems associated with project construction and ways to avoid problems on your own site.

Presentations provided by:

ILLINOIS ENVIRONMENTAL PROTECTION AGENCY
KENDALL COUNTY SOIL & WATER CONSERVATION DISTRICT
HANES GEO COMPANIES
DEUHLER ENGINEERING CORP
CHRISTOPHER B. BURKE ENGINEERING LTD

Sponsored By:

