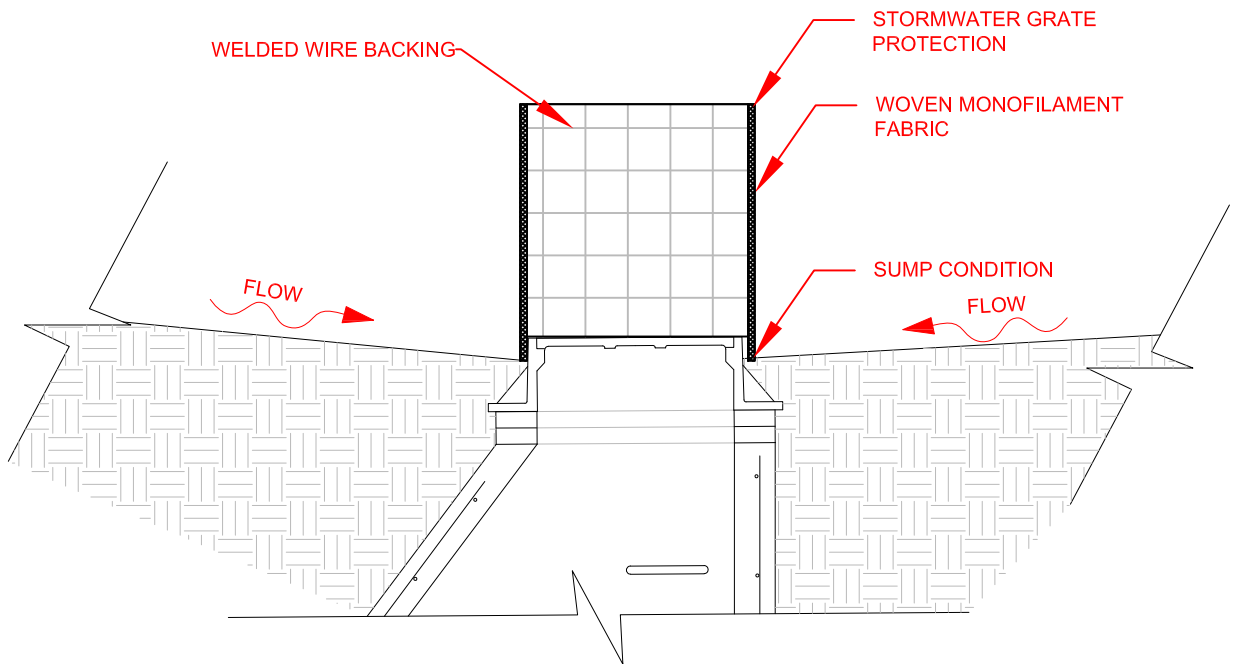
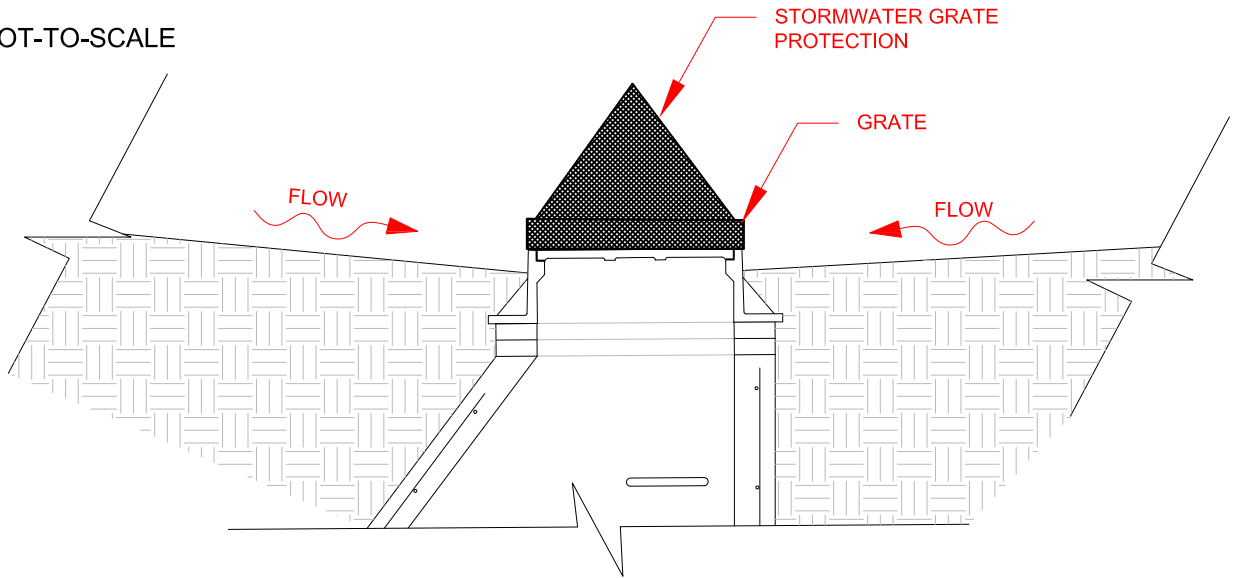


# MANUFACTURED ABOVE GRADE INLET PROTECTION

NOT-TO-SCALE



**NOTES:**

1. A maintenance schedule must maintain a sediment accumulation of less than 50% of the height of the inlet protection.
2. Device should be supported.
3. Fabric type should be IUM 592 Standard Table 1 Class 4

REFERENCE			
Project	_____	Date	_____
Designed	_____	Date	_____
Checked	_____	Date	_____
Approved	_____	Date	_____

STANDARD DWG. NO.
IUM-531
SHEET 1 OF 1
DATE 03-27-17