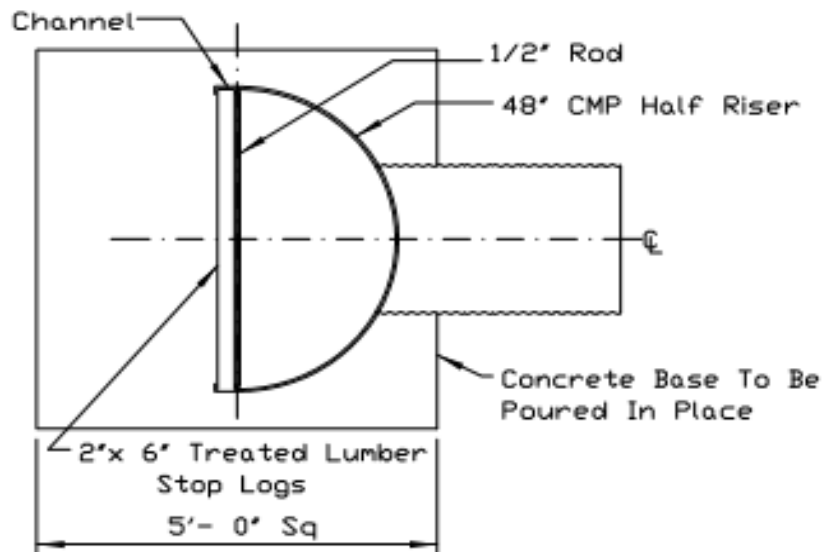
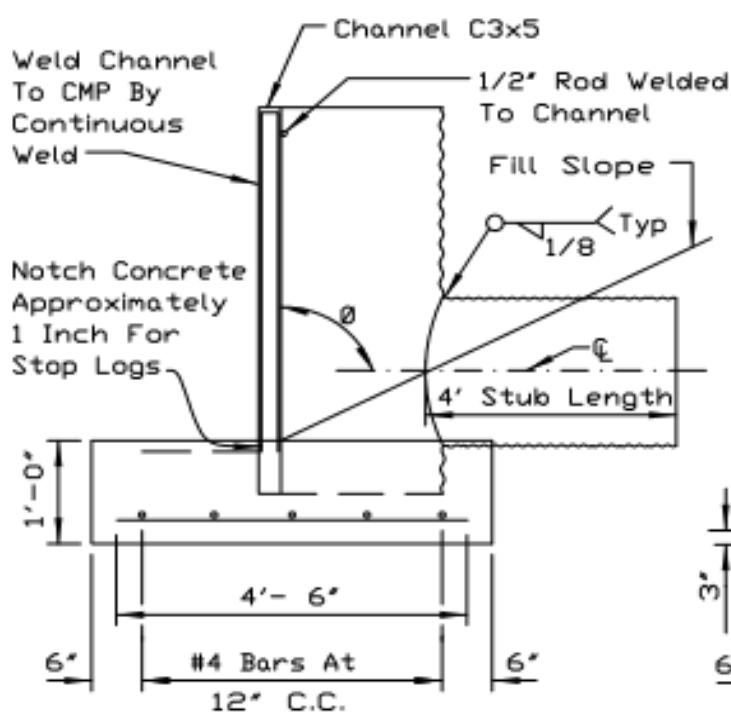


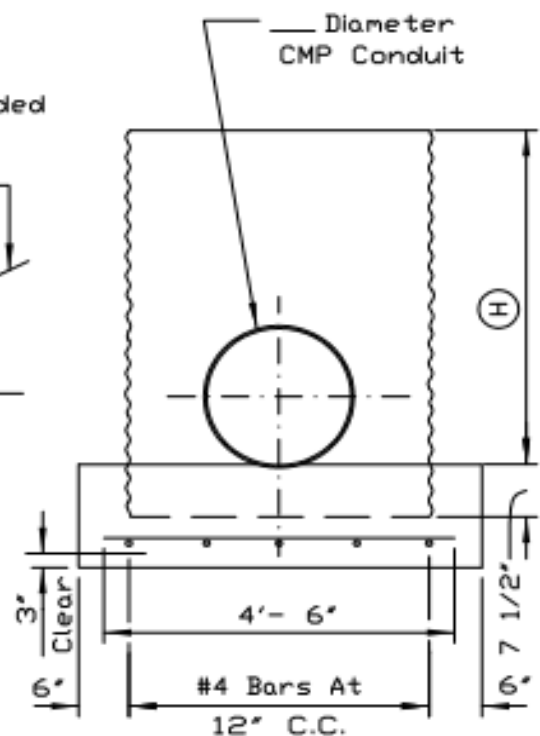
CMP WATER CONTROL STRUCTURE



PLAN



SIDE ELEVATION



DOWNSTREAM ELEVATION

REFERENCE
 Project _____
 Designed _____ Date _____
 Checked _____ Date _____
 Approved _____ Date _____



Natural Resources Conservation Service

NRCS

STANDARD DWG. NO.

IL-594

SHEET 1 OF 2

DATE 4-29-94

CMP WATER CONTROL STRUCTURE

TABLE SHOWING DIMENSIONS AND MATERIAL

	Dimensions
Nominal Length (H) In Feet Of CMP Riser And Channels	
Gage Of Riser In Inches	
Gage Of Conduit In Inches	
Ø Angle In Degrees	
MATERIALS	Quantity Required
Number Of #4 Reinforcing Bars 4'- 6' Long	10
Weight Of #4 Reinforcing Bars In Pounds	30
Volume Of Concrete In Cubic Yards	1.0
Number Of 1/2 Inch Rods 48' Long	1.0
Number Of 2'X 6' Stop Logs (Approximate Length 48')	

NOTES:

1. The riser height shall be limited to 5 feet.
2. The conduit diameter shall be limited to 12" thru 27".
3. The corrugated metal riser with 4 feet conduit stub shall be fabricated from galvanized steel or aluminum. If fabricated from steel, any zinc coating damaged by welding shall be repaired as follow:
 A) All loose and cracked coating shall be removed by wire brushing and all dirt and greasy material by a suitable solvent.
 B) The damaged area shall be painted with two coats of Zinc Dust-Zinc Oxide Primer, follow by a heavy coat of Fibrated Asphalt Mastic.
4. Corrugated aluminum risers and conduits shall be separated from the reinforced concrete base by at least 2 layers of plastic tape with a total thickness of at least 24 mils or by a heavy coat of Alkali-Resistant Bituminous paint.

REFERENCE

Project _____
 Designed _____ Date _____
 Checked _____ Date _____
 Approved _____ Date _____



Natural Resources Conservation Service

NRCS

STANDARD DWG. NO.

IL-594

SHEET 2 OF 2

DATE 4-4-94