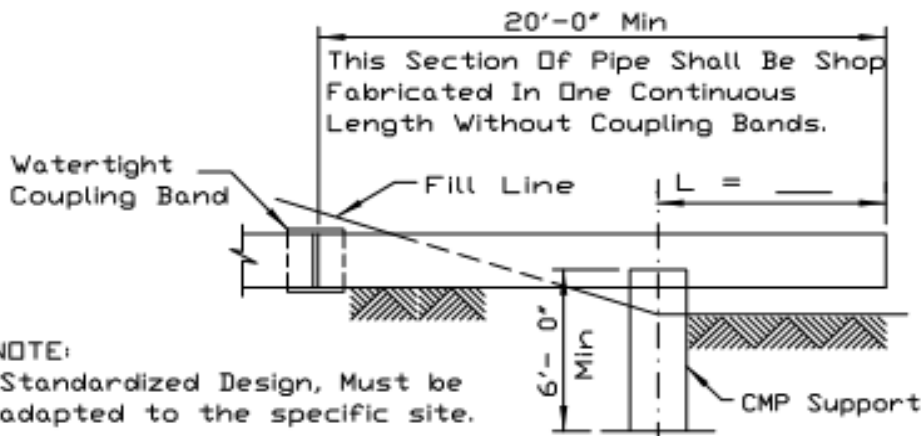


# CORRUGATED METAL PIPE SUPPORT



## NOTE:

Standardized Design, Must be adapted to the specific site.

## SECTION ON CENTERLINE

TABLE OF DIMENSIONS				
C.M. PIPE DIA (INCHES)	BOTTOM PLATE (METAL THICKNESS AND GAGE)	VOLUME OF CONC. (CU YDS / LIN FT) OF CMP	7/16" DIA HOLD DOWN ROD LENGTH	3/4" DIA ROD LENGTH
8	.064, 16 GA.	.01	2'-3"	1'-2"
10	.064, 16 GA.	.02	2'-6"	1'-4"
12	.064, 16 GA.	.03	2'-8"	1'-6"
15	.079, 14 GA.	.05	3'-0"	1'-9"
18	.079, 14 GA.	.07	3'-4"	2'-0"
21	.079, 14 GA.	.09	3'-8"	2'-3"
24	.109, 12 GA.	.12	4'-0"	2'-6"
30	.109, 12 GA.	.18	4'-8"	3'-0"
36	.138, 10 GA.	.26	5'-4"	3'-6"
42	.168, 8 GA.	.36	6'-0"	4'-0"
48	.188, 7 GA.	.47	6'-7"	4'-6"

## BILL OF MATERIAL

Galv Steel CMP \_\_\_ dia, \_\_\_ lin. ft. Metal Thickness \_\_\_, Gage \_\_\_

Galv Steel Bottom Plate \_\_\_' x \_\_\_' Metal Thickness \_\_\_, Gage \_\_\_

3/4" Dia. Galv Steel Rod \_\_\_ feet, threaded 4' on each end with 4 washers and 2 nuts.

7/16" Dia. (min) Galv. Steel Rod \_\_\_ feet, with 1/2" dia. (min) upset thread (thread approx. 8')

Galv. Tank Lug - 1 each

Concrete \_\_\_ cu. yds.

Steel Reinforcement 6.7 pounds

## REFERENCE

Project \_\_\_\_\_

Designed \_\_\_\_\_ Date \_\_\_\_\_

Checked \_\_\_\_\_ Date \_\_\_\_\_

Approved \_\_\_\_\_ Date \_\_\_\_\_



**NRCS**

Natural Resources Conservation Service

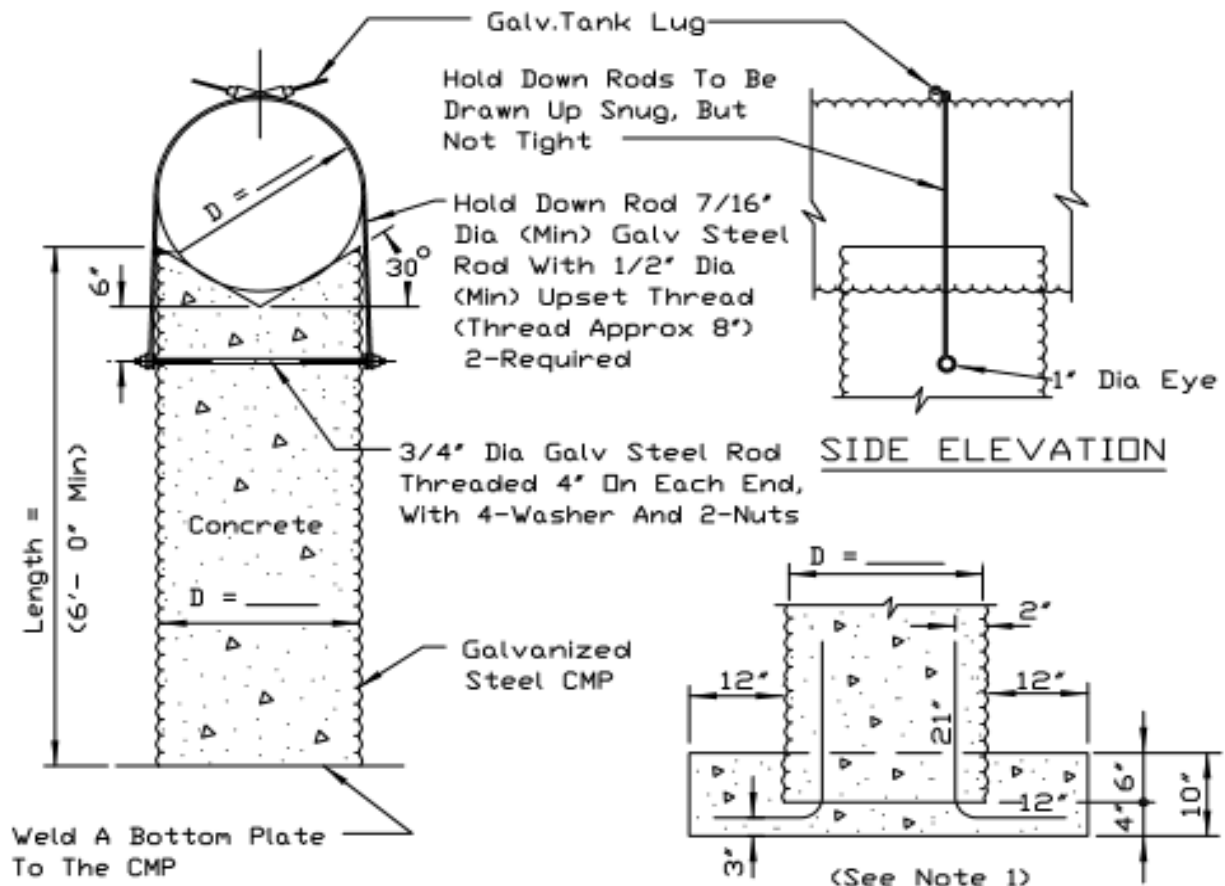
## STANDARD DWG. NO.

IL-586

SHEET 1 OF 2

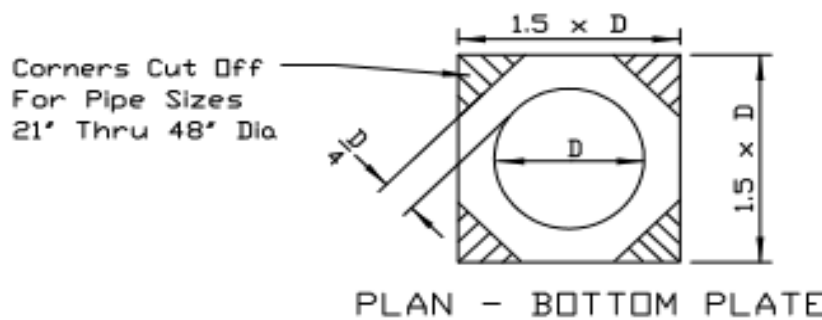
DATE 4-6-94

# CORRUGATED METAL PIPE SUPPORT



END ELEVATION

REINFORCED CONCRETE BASE



## NOTES:

1. If the pier has to be shortened because of bedrock, a 10" reinforced concrete base must be provided, instead of bottom plate, extending 12" beyond the pipe diameter using 4 - #4 re-bars, 33" long; bent as shown.
2. If principal spillway conduit is aluminum, the surfaces in contact with the concrete shall be separated with a layer of heavy roofing felt.

REFERENCE  
Project \_\_\_\_\_  
Designed \_\_\_\_\_ Date \_\_\_\_\_  
Checked \_\_\_\_\_ Date \_\_\_\_\_  
Approved \_\_\_\_\_ Date \_\_\_\_\_



STANDARD DWG. NO.  
IL-586  
SHEET 2 OF 2  
DATE 4-6-94