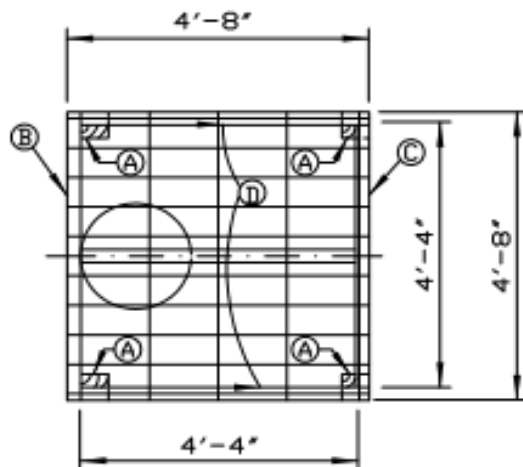
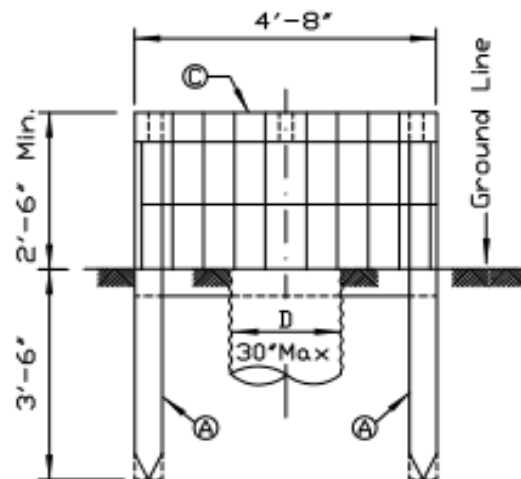


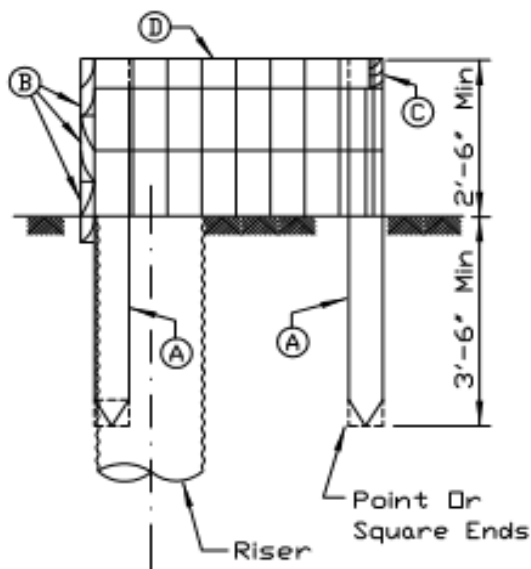
# HEADWALL & SAFETY GUARD FOR PIPE RISERS



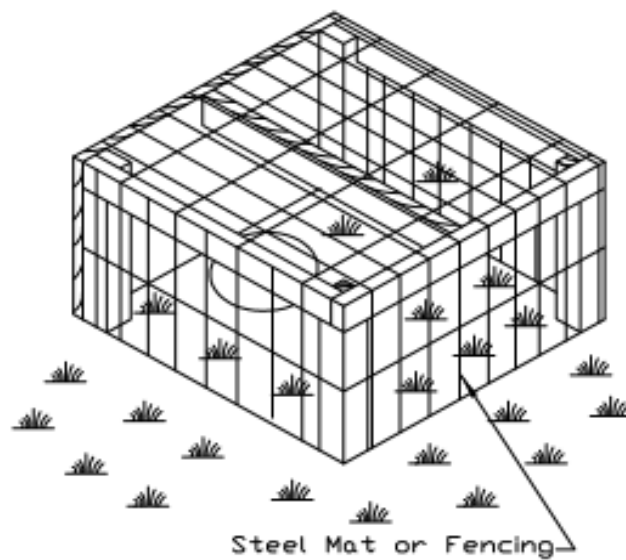
PLAN VIEW



FRONT ELEVATION



SIDE ELEVATION



ISOMETRIC VIEW

REFERENCE  
Project \_\_\_\_\_  
Designed \_\_\_\_\_ Date \_\_\_\_\_  
Checked \_\_\_\_\_ Date \_\_\_\_\_  
Approved \_\_\_\_\_ Date \_\_\_\_\_



**NRCS**

Natural Resource Conservation Service

STANDARD DWG. NO.

IL-576

SHEET 1 OF 2

DATE 4-1-94

## HEADWALL & SAFETY GUARD FOR PIPE RISERS

ESTIMATED QUANTITIES			
MARK	NO.	SIZE	LENGTH
A	4	4" x 4"	6'- 0"
B	3	2" x 12"	4'- 8"
C	1	2" x 6"	4'- 8"
D	3	2" x 6"	4'- 4"
Board Feet - 77			

### NOTES:

1. All wood shall be pressure-treated with a creosote-coaltar solution or a pentachlorophenol solution.
2. All joints shall be nailed with spikes using at least 2 in each joint.
3. Posts shall be 4' square, notched as shown, with bottom left square if not driven.
4. The steel mat covering shall be 6x12 style two-way welded galvanized wire fabric or welded galvanized cattle panels with 1/4" rods and 4"x 8" openings. All splices shall be made at the corners. The edge of the mat shall be made at corners. The edge of the mat shall be bent at least 2' around the corners and the mat fasten to the frame by 2" long galvanized staples on 6" centers.

### REFERENCE

Project \_\_\_\_\_  
 Designed \_\_\_\_\_ Date \_\_\_\_\_  
 Checked \_\_\_\_\_ Date \_\_\_\_\_  
 Approved \_\_\_\_\_ Date \_\_\_\_\_



**NRCS**

Natural Resources Conservation Service

### STANDARD DWG. NO.

IL-576

SHEET 2 OF 2

DATE 2-18-94