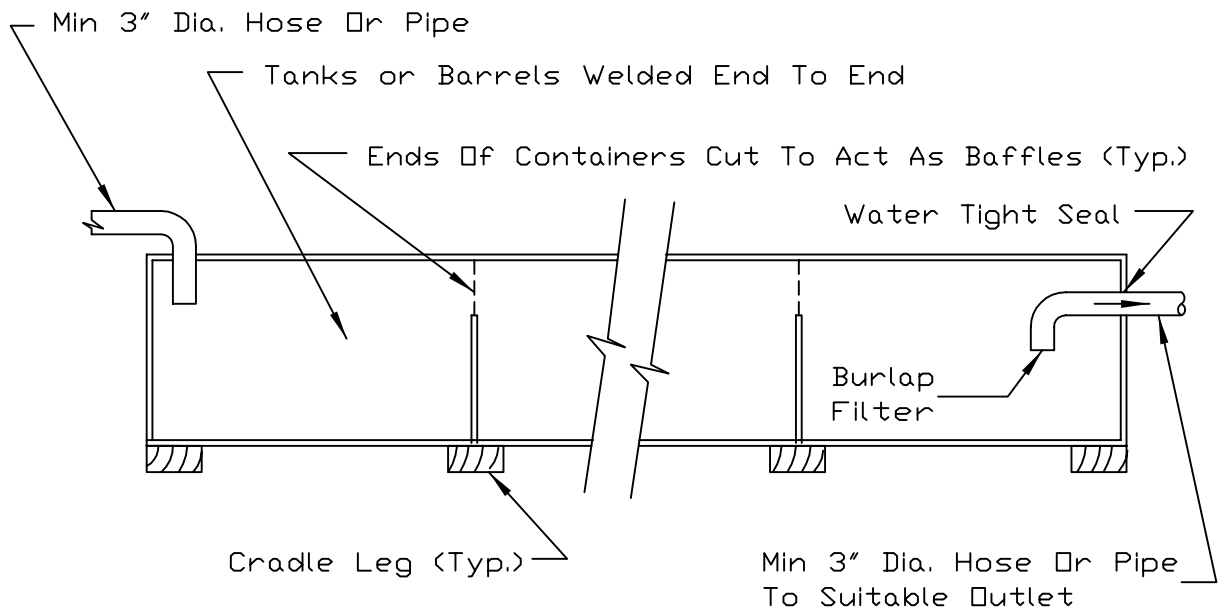
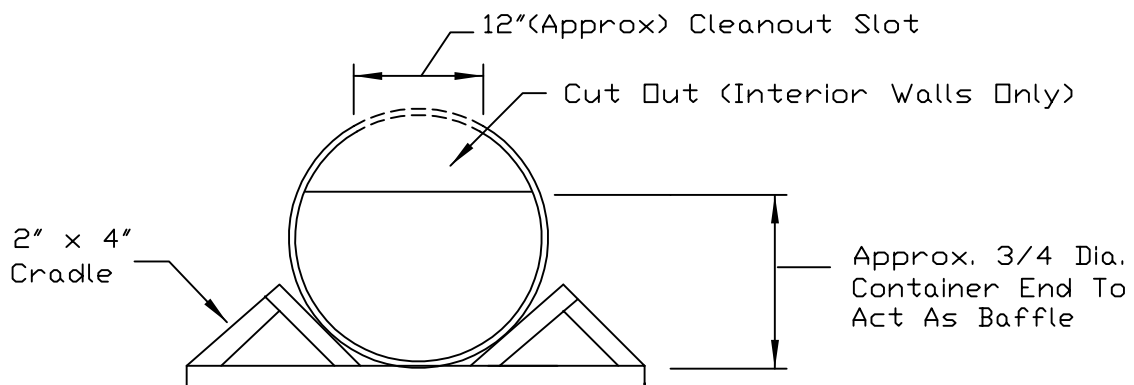


# PORTABLE SEDIMENT TANK PLAN



## SECTION ON CENTERLINE



## TYPICAL SECTION A-A

### NOTES:

1. Clean out the sediment tank when one-third filled with sediment.
2. Steel drums are used as an example due to their ready availability. Any tanks may be used, providing that the volume requirements are met.
3. All sediment collected in the tank shall be disposed of in a sediment trapping device or as approved by the engineer/inspector.

Volume required in tank: \_\_\_\_\_ cubic feet.

### REFERENCE

Project \_\_\_\_\_  
 Designed \_\_\_\_\_ Date \_\_\_\_\_  
 Checked \_\_\_\_\_ Date \_\_\_\_\_  
 Approved \_\_\_\_\_ Date \_\_\_\_\_



Natural Resources Conservation Service

**NRCS**

### STANDARD DWG. NO.

IL-595

SHEET 1 OF 1

DATE 3-3-95